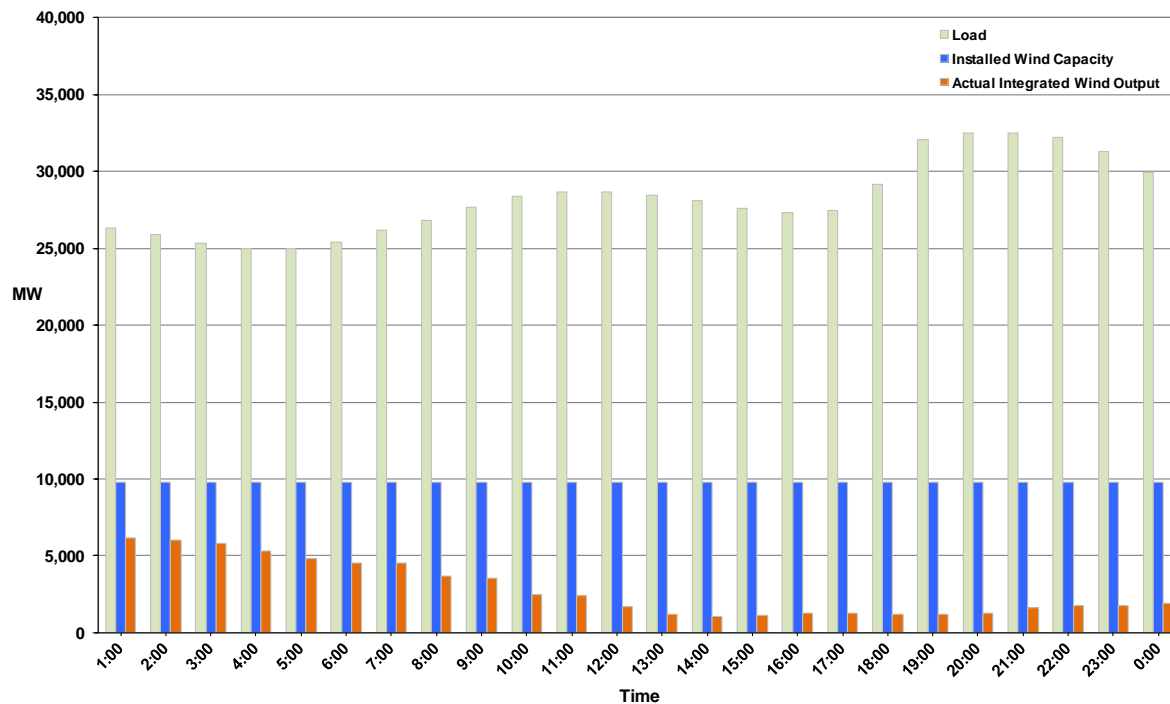




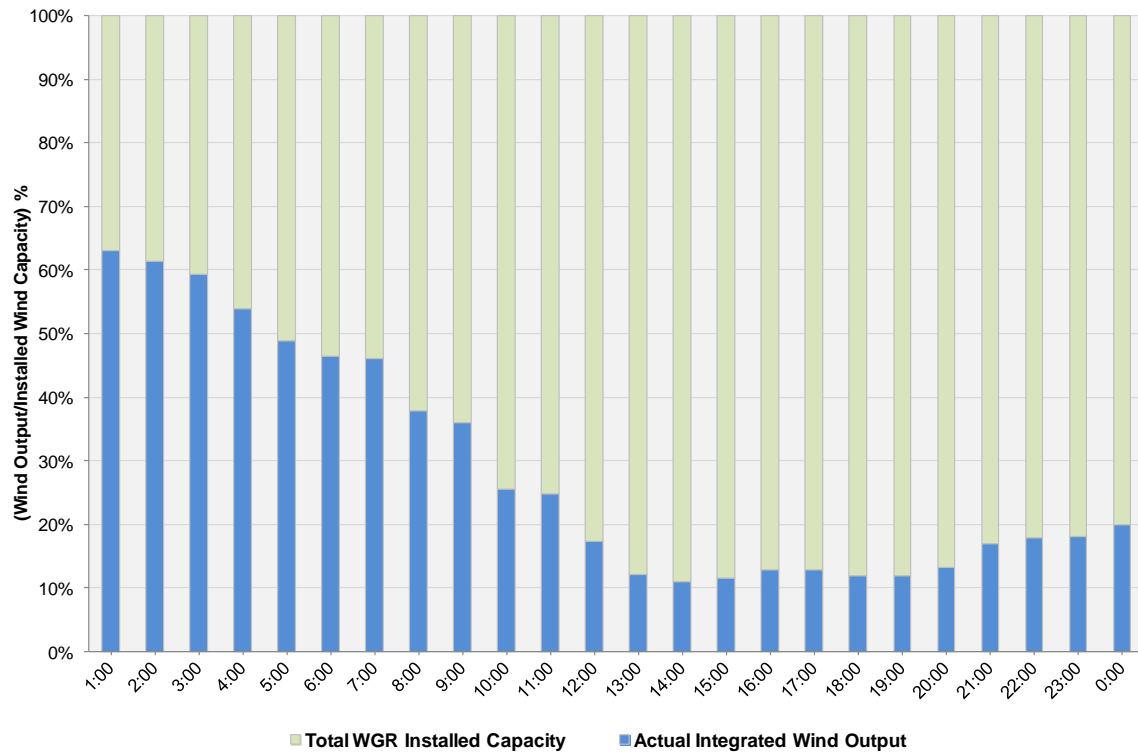
ERCOT Grid Operations Wind Integration Report: 01/01/12

Peak Load	32,512 MW
Load Peak Hour (HE)	20
Wind over Peak	1,288 MW
Wind Record 10/07/11	7,400 MW
Max Wind Value	6,326 MW
Wind Peak Time	00:24
Wind Integration %	23.99%

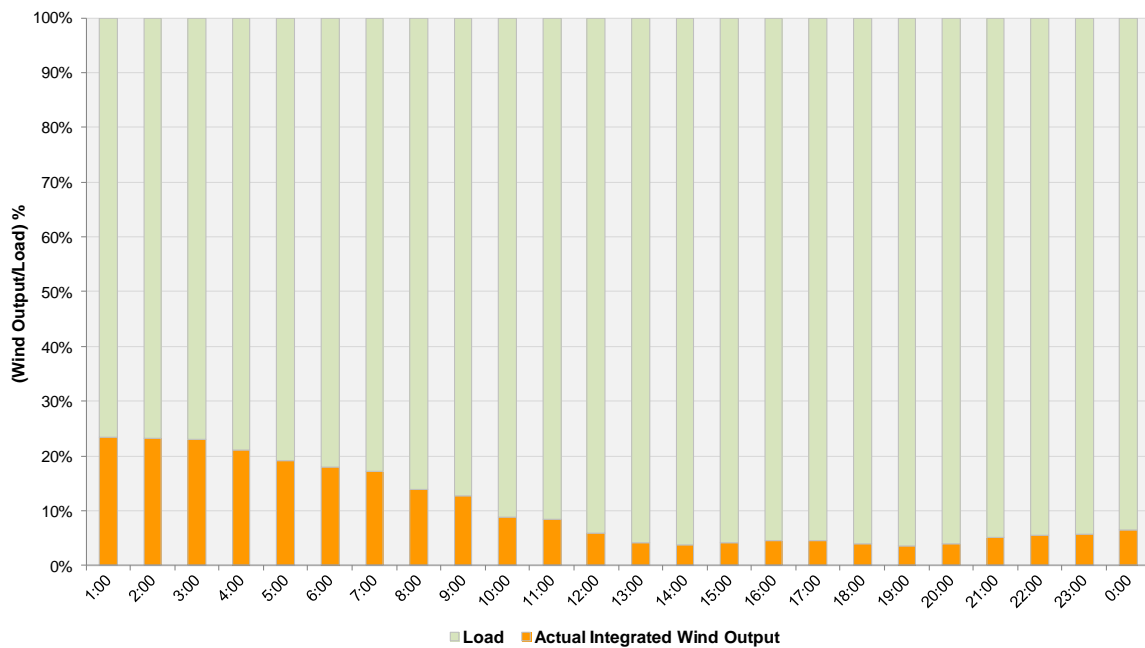
Hourly Average Actual Load vs. Actual Wind Output
01-01-2012



Actual Wind Output as a Percentage of the Total Installed Wind Capacity
01-01-2012



Actual Wind Output as a Percentage of the ERCOT Load
01-01-2012



ERCOT Load vs. Actual Wind Output 12/25/2011 - 1/1/2012

